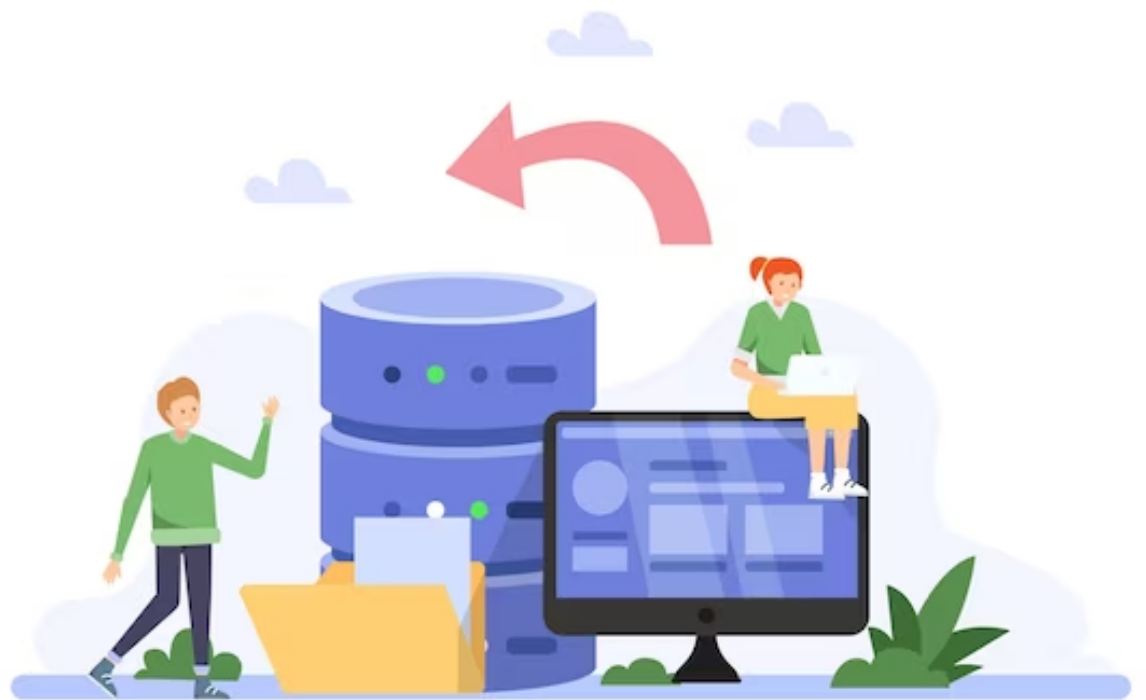


DATA MIGRATION

**"DATA MIGRATION:
TURNING
COMPLEXITY INTO
SIMPLICITY, ONE
DATA POINT AT A
TIME."**



STREAMLINING DATA MIGRATION FOR SUCCESS: A COMPREHENSIVE WHITEPAPER



In today's data-driven world, successful migration is paramount for organizations seeking growth and adaptability. Whether it's upgrading systems, optimizing data management, or transitioning to new platforms, effective migration is the key to unlocking your data's potential. This whitepaper is your guide to mastering data migration, offering insights, best practices, and the latest tools to streamline the process. From ETL solutions to data integration, we'll navigate the evolving landscape together, ensuring your data journey is efficient and transformative, setting the stage for future success

**"ELEVATE YOUR DATA:
EMPOWERING SEAMLESS
MIGRATION WITH THE RIGHT
TOOLS"**

**"ELEVATE DATA
MANAGEMENT WITH
APACHE NIFI, TALEND,
AND APACHE SPARK"**

"Master data integration with **Apache NiFi, Talend, and Apache Spark**. Unleash their power for seamless, real-time analytics and data transformation."

Informatica:

Informatica is a versatile ETL tool known for its data integration and data quality services, offering cloud-native solutions and master data management (MDM) capabilities. It's used in diverse industries for data warehousing, data migration, and real-time data integration



**"ETL SHOWDOWN:
INFORMATICA VS. SQL
SERVER INTEGRATION
SERVICES (SSIS)"**

SQL Server Integration Services (SSIS):

SSIS, part of Microsoft's SQL Server suite, is a robust ETL tool integrated into Visual Studio. It excels in data transformation, connectivity, and package deployment, making it ideal for data migration, data warehousing, and automation tasks, especially in organizations using Microsoft SQL Server.

**DATA INTEGRATION
DYNAMO: APACHE BEAM,
CLOVERDX, SNAPLOGIC"**

In the domain of data integration Apache Beam, CloverDX, and SnapLogic are the undisputed champions. Apache Beam seamlessly blends batch and stream processing, delivering unparalleled flexibility. CloverDX specializes in data transformation, migration, and quality. SnapLogic, a cloud-based ETL solution, simplifies the complex with its intuitive interface. These three powerhouses redefine data workflows, providing agility, adaptability, and simplicity for your data integration needs

BENIFITS

- Improves Performance
- Cost Saving
- Enhanced Data Accessibility
- Data Cleanup
- Scalability
- Data Security
- Reduced Downtime
- Compliance and Governance
- Business Continuity
- Competitive Advantage
- Consolidation
- Future-Proofing
- Data Backup
- Collaboration



**"DEMYSTIFYING DATA
MIGRATION CHALLENGES:
OVERCOMING HURDLES WITH
PRECISION"**

Data migration, while essential, presents its share of challenges. The shift from legacy systems to modern infrastructure often involves complexities, such as data format disparities, potential data loss, and downtime disruptions. Ensuring data integrity and maintaining business continuity during migration is paramount. Compliance with data protection regulations and managing the sheer volume of data can be daunting. The efficient coordination of teams and resources to execute a smooth transition adds another layer of complexity. Addressing these challenges requires meticulous planning, thorough testing, and the right tools to ensure a successful data migration process.

**CATALYZE YOUR DATA
JOURNEY WITH INFIHIVE:
YOUR MIGRATION PARTNER**

WWW.INFIHIVE.COM